



InformEtica Consulting s.r.l.

Viale del Lavoro 33
Centro Direzionale E33
37036 San Martino Buon Albergo (VR)
tel +39 045 4857630

www.informeticons.com



SAP Italia S.p.A.

Campus tecnologico
ENERGY PARK - Edificio 03
Via Monza 7/a
20059 Vimercate (MB)
tel. 039.6879.1
fax 039.6091005
info.italy@sap.com

It could seem unusual and unfashionable to remark the presence of Ethics in its own DNA. It is not so.

For sure we have a strong link with traditional values, the value based on human relations, considering just human relations as central element. Respect, consideration, discipline and honesty are much more than simple nouns: they are our way of understanding life and professional commitment. They are values which must be experienced as a choice, as a full commitment. Our first commitment is to be an ethically reliable partners.

InformEtica Consulting was founded in 2005 by some professionals who gained experience at the most important national and International system integrators and consulting companies.

Seniority, experience and global vision of IT services, marked immediately the difference of InformEtica, able to realize and delivery high added value projects.

InformEtica Consulting adopted SAP Business One for Small and Medium Enterprises as a strategic business philosophy, with an immediate winning feedback from the market.

The areas of intervention are not limited to technical aspects and ITC, but also include management consulting, analysis and process re-engineering, training.

InformEtica Consulting employees people with SAP certification. InformEtica has more than 50 projects in ERP are, all of them are successful. Today, InformEtica is considered one of the leading SAP Business One partner in Italy, with respects to projects and company brand awareness.

SAP helps companies of all sizes and industries run better. From back office to boardroom, warehouse to storefront, desktop to mobile device, SAP empowers people and organizations to work together more efficiently and use business insight more effectively to stay ahead of the competition. We do this by extending the availability of software across on-premise installations, on-demand deployments, and mobile devices. We believe that the power of our people, products, and partners unleashes growth and creates significant new value for our customers, SAP, and, ultimately, entire industries and the economy at large. Our mission is to help companies of all sizes and industries to run better. Our vision is to help the world run better.

About the Company

Headquartered in Walldorf, Germany, SAP is the market leader in enterprise application software. Founded in 1972, SAP (which stands for "Systems, Applications, and Products in Data Processing") has a rich history of innovation and growth as a true industry leader. SAP applications and services enable more than 172,000 customers worldwide to operate profitably, adapt continuously, and grow sustainably. With revenue (IFRS) of €12.5 billion for the year 2010, SAP has more than 54,000 employees and sales and development locations in more than 50 countries worldwide.

SAP is listed on several exchanges, including the Frankfurt stock exchange and NYSE, under the symbol "SAP."

SAP® Certified
SAP Business One Integration

LPOne



Lean Production One: discrete manufacturing and ETO/MTO management in SAP Business One now is lean

LPOne supports the complete manufacturing cycle, from product development and cost planning to activities posting, including costs and stock availability.



English Version



Introduction

As management philosophy, the Lean Production approach is focused to remove all “zero added value activities” in the production flow, improving processes and management attention to processes increasing customer value or decreasing wastage.

LPOne supports with a full and seamless approach the manufacturing topics, having the goal to reduce any wastage everywhere it is possible, analyzing and removing the reasons for them, reducing costs and improving simultaneously manufacturing company system quality, reliability and agility.

The context and the approach

LPOne is absolutely integrated in SAP Business One, the SAP Business One Integration certification states it worldwide.

LPOne runs, when it is possible, the standard SAP routines. If necessary, LPOne adds additional elements to mentioned routines, to increase and improve processes coverage.

All the functionalities and the data structures that are specific for LPOne, are been developed following rigorously SAP standards, to guarantee both operation and maintenance and additional future development.

Functional coverage and commercial positioning



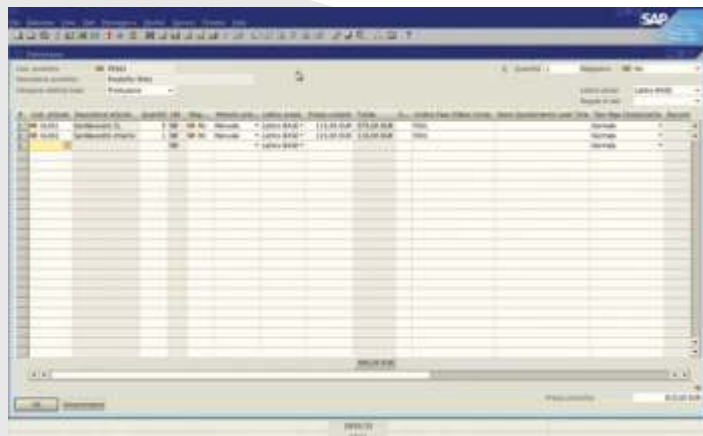
LPOne is structured in some modules, as shown in the above scheme, grouping manufacturing specific features and processes.

Below you can see, for each module, description of each functionality.

Special Functions

Present module includes “vertical” functions, covering specific processes typical in some manufacturing industries:

- Cutting orders management, for coils and plates
- Characteristics based customer orders management: determination of sales quantities, on the base of measures and configuration rules



Bill of Materials Input



Subcontracting orders creation

Production Management

Technical Data

Bill of Materials

- Multilevel Bill of Materials
- Scalar Explosion
- Components implosion
- Analysis “where used”
- Data Structure Copy
- Components Substitution
- Components Validity Date Management
- Bill of Materials Versions Management
- Project Bill of Materials (based on standard or based on other projects)

Work Centres

- Shifts
- Manufacturing capacity
- Hour rate (manpower, machine, set-up)

Routings

- Standard and project routings
- Outsourced manufacturing activities (Subcontracting)
- Activities Validity Date Management
- Routing Versions Management
- Project and project item management
- Stock availability analysis and project availability analysis
- Project Orders automatic generation (purchasing or production)
- Planned / WIP / Actual Costs Analysis
- Standard Costs deviation analysis
- Analysis marginality
- Average cost determination and warehouse value determination
- MRP - Materials Planning
- MRP - Suggestions Management (cancel, delay, anticipation, change quantity, ...)
- MRP - Analysis results with Pegging management
- CRP - Capacity Resources Planning

Subcontracting

- Third party warehouse management
- Purchase Orders Automatic Generation from Production Orders
- Single order material transfer management (in and out, including delivery to next subcontractor for additional external activities)
- Material transfer to stock
- Subcontracting status analysis for activities and stock

Purchase Order Requests/Purchase Offer Request

- Purchase Order Requests management (coded or not coded materials)
- Purchase Order Requests Approval (user authorization management)
- Purchase Orders Requests generated from Purchase Orders Requests and/or planned order from MRP
- Simultaneous and automatic Purchase Order Offer Requests Sending (e-Mail or fax) to appropriate suppliers
- Purchase Order Offer Confirmation, generating automatically Purchase Orders
- Historical Data Analysis

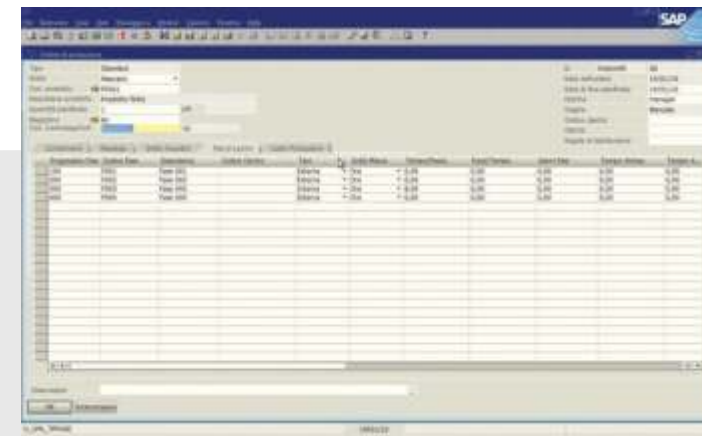
Production Posting Management

Production Posting Management could be addressed with two different approaches:

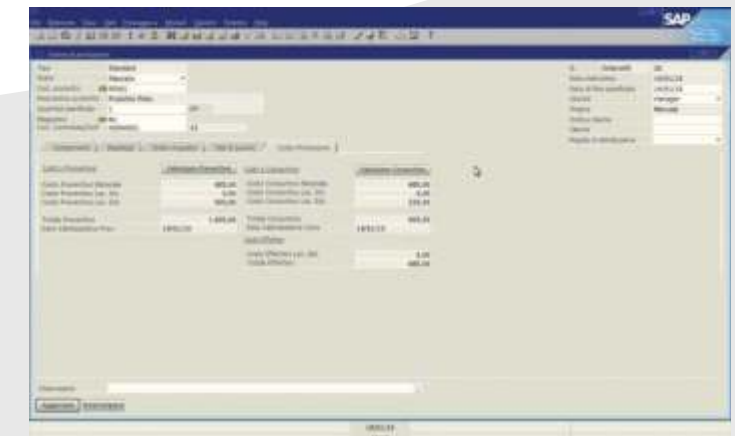
- Integration with MES (Manufacturing Execution System): real time manufacturing process control, with predefined with parameters) actual data transfer to SAP. The LPOne integration module with the MES system Opera (from Open Data), could be easily customized for other MES systems.
- Manual posting: production manual posting, based on production reports and/or clerks declarations. Usually is not a real time process.

Production Scheduling

Module that intragrate the APS system Preactor by Preactor International. The LPOne integration module could be easily customized to integrate other APS systems.



Production orders with internal and external phases



Planned and actual costs of manufacturing order